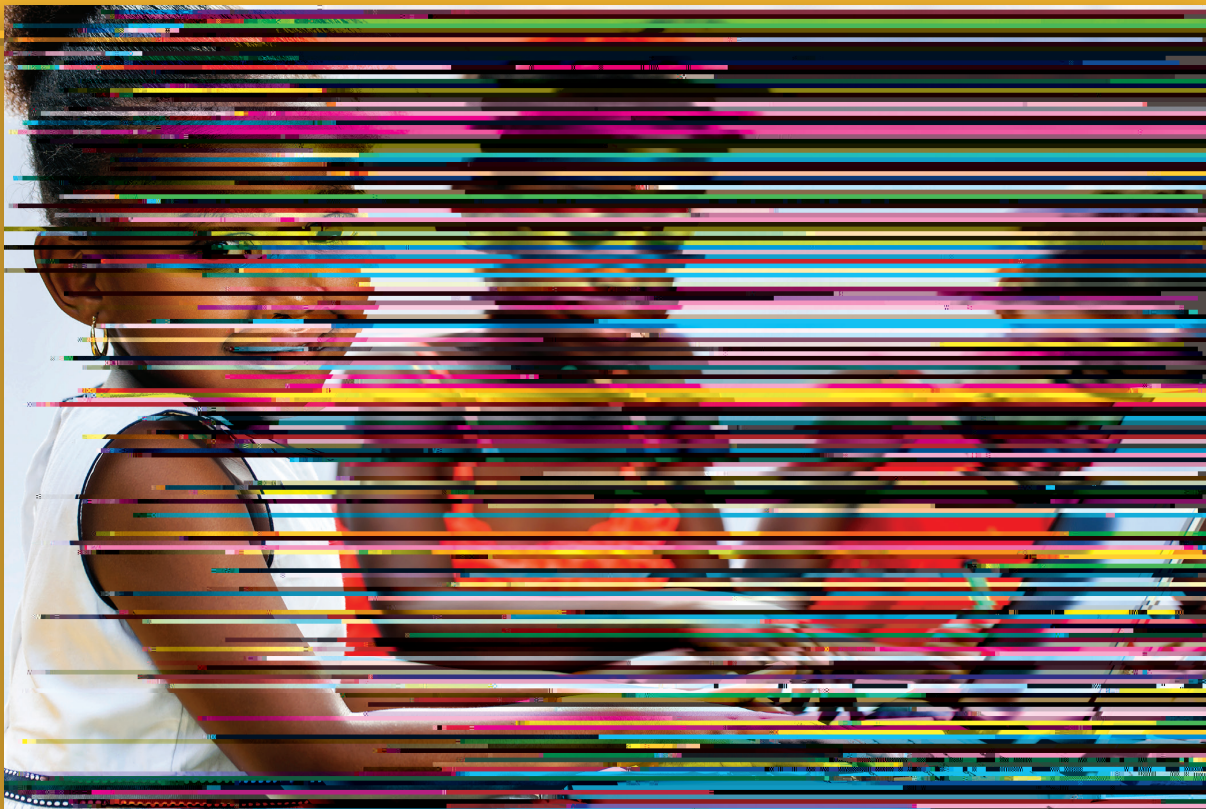




Thoughts on Early Education & Child Care



With 20 years of experience, Brightside Academy is a leading



Importance of After-school Programs

Hours between 3pm and 6pm are peak time for children to commit crimes or become victims of crimes.¹ This is also the time that children are most likely to experiment with drugs and alcohol. The risks are so high, yet 11.3 million children are currently unsupervised after school.²

According to America After 3PM, 18% of urban children are currently involved in an after school program, while 26% of urban children rely on self-care until parents or caregivers are home from work. The study also found that 46% of urban children would participate if an after school program were available to them.³

Studies show that 78% of parents with children attending after school programs say their children make better life choices and make substantial gains in reading and math skills. Furthermore, 80% of parents agree that their children develop stronger social skills while attending an after school program.⁴

Studies show that there continues to be an unmet demand for after school programs. Brightside Academy is committed to solving the problem by providing after school programs at 59 out of our 63 academies. Additionally, 33 of our locations provide transportation from local schools to the academy.

Parents of children in our after school programs have rated our programs at 3.25/5. Approximately 28.9% of parents surveyed stated that their child developed stronger social skills.

Not only do after school programs make a substantial impact on the well-being of children and parents, but they also save tax dollars. Every \$1 spent in an after school program saves \$9 because these programs have proven to reduce crime and welfare costs.⁶ They also improve children's performance in school, thereby increasing their earning potential as an adult.

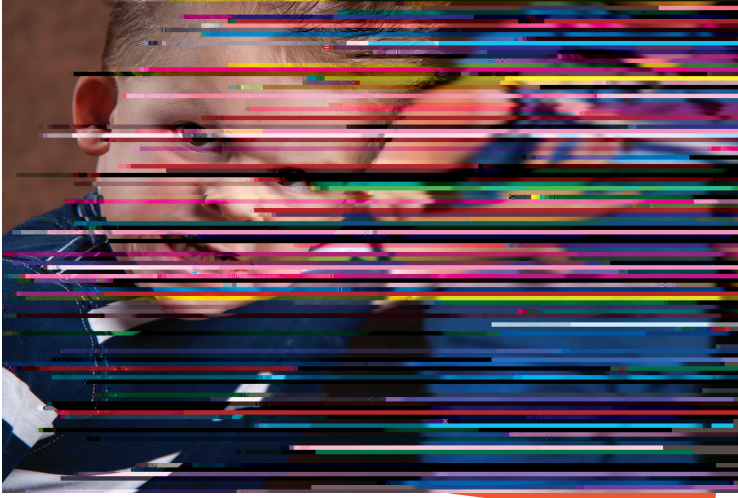
Brightside Academy's after school programs give children the opportunity to socialize with children from other schools. In some instances the school districts have multiple elementary schools that combine once the children enter middle school. Children in our after school program are already



Bullying is a problem that begins long before middle school. Many programs and educators focus anti-bullying initiatives with middle school children, but many bullying behaviors may



- Teachers and staff model ways for young children to make friends and teach manners
- The staff uses age-appropriate ~~co~~ ~~55030a53oets~~ ~~..s.f(e)-7.2 (s.a)-37.2s a32d~~ ~~...~~



Social & Emotional Development

Results from multiple studies estimate that approximately 10% of young children suffer from emotional and behavioral challenges that impair their ability to learn, with the incidence among economically disadvantaged young children being 2 or 3 times as high as their more advantaged peers.¹ Appropriate social and emotional skills allow children to get along with others, to behave and follow directions. A lack of these skills can create serious repercussions for a child in their school years and beyond.

According to over 80% of kindergarten teachers in a national survey, the capacities to get along with other children, behave in class, and follow directions were characteristics considered essential or very important in children starting school.²

Our instructors attributed the challenges of teaching appl

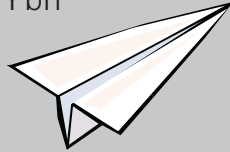


GcWjU`/ `9a ch]cbU`8Yj Y`cda Ybh` (continued)

obstacles to learning for young children struggling with self-regulation were 33.9% problems with transitions; 30.4% acting impulsively, cannot

RESOURCES

Below is a list of websites families can turn to for additional guidance on the areas of Bullying, After-school Programs and Social and Emotional Learning.



BULLYING

- www.stopbullying.gov
- www.pacerkidsagainstabullying.org/kab/
- www.stompoutbullying.org/
- www.pacer.org/bullying/

Pittsburgh, PA

- <http://ruscitto.org>
- www.chp.edu/injury-prevention/teachers-and-parents/school-violence/parents

Philadelphia, PA

<http://cap4kids.org/philadelphia/parent-handouts/education-resources/bullying-resources/>

New York

www.bridgit.com/

Ohio

https://saferschools.ohio.gov/content/anti_harassment_intimidation_and_bullying_resources

SOCIAL & EMOTIONAL BEHAVIORAL CHALLENGES

- www.pacer.org/cmh/resources/featured-resources/
- www.cssp.org/policy/papers/Promote-Childrens-Social-Emotional-and-Behavioral-Health.pdf
- <http://challengingbehavior.fmhi.usf.edu/communities/families.htm>
- www.kidsmentalhealthinfo.com/

Pittsburgh, PA

www.chp.edu/our-services/behavioral-health

Philadelphia, PA

www.chop.edu/centers-programs/child-and-adolescent-psychiatry-and-behavioral-sciences/#.VthXxea2pQk

New York

[http://schools.nyc.gov/NR/ronlyres/7C025BB1-FFB1\(-8!,:::!:-%67&8*9,%#\)\\$#ResourceReferenceSheet_V15.pdf](http://schools.nyc.gov/NR/ronlyres/7C025BB1-FFB1(-8!,:::!:-%67&8*9,%#)$#ResourceReferenceSheet_V15.pdf)

Ohio

- www.thechildrenshomecinti.org/get-familiar-with-the-childrens-home/services/early-childhood-programs/
- www.cincinnatichildrens.org/patients/child/special-needs/medical/mental-health/

AFTER-SCHOOL PROGRAMS

- www.expandinglearning.org/expandingminds/article/importance-afterschool-programs-education-reform-worldwide-making-it
- [http://childdevelopmentinfo.com/learning/after-school-dfc\[fUa g'VYbYUhg#](http://childdevelopmentinfo.com/learning/after-school-dfc[fUa g'VYbYUhg#)
- www.noodle.com/articles/why-_XgVYbYUhgZca!UZNYflgWcc!programs

Pittsburgh & Philadelphia (Pennsylvania)

- www.afterschoolalliance.org/policyStateFacts.cfm?state_abbr=PA
- www.psaydn.org/

New York

www.nysan.org/

Ohio

www.afterschoolalliance.org/policyStateFacts.cfm?state_abbr=OH



Brightside
ACADEMY